

TLDS LIGHT DUTY STRAPS

For vertical restraint against wind pressure and suction. Ties timber to brickwork or blockwork at floor level, eaves or ridge level.

Options

Made from Galvanised Steel. Straps are available in stainless steel to special order.

Fixing

In masonry, use hardened nails or wall plugs and screws. In timber use 8 swg x 75mm nails or No. 12 x 50mm wood screws. Where there is a gap between the wall and the joist running parallel to it, and a strap is being used across the joists, the gap should be packed and noggins provided between joists being secured.

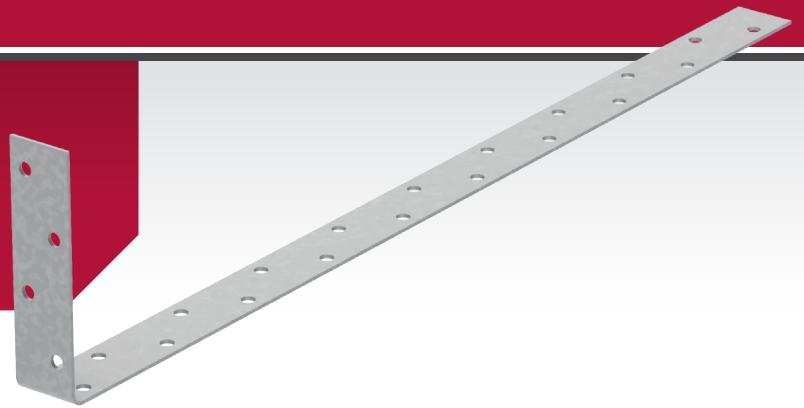
Technical

Manufactured from galvanised steel. 6mm holes at 25mm offset centres.

Ordering

Straps can be cut, bent and twisted to your requirements.

1. Type: Light Duty
2. Overall length
3. Distance to bends and twists - all from one end.



TTHDS HEAVY DUTY STRAPS

For lateral restraint against wind pressure and suction. Ties timber to brickwork or blockwork at floor level, eaves or ridge level.

Options

Made from Galvanised steel. Straps are available in stainless steel to special order.

Fixing

In masonry, use hardened nails or wall plugs and screws. In timber use 8 swg x 75mm nails or No. 12 x 50mm wood screws. Where there is a gap between the wall and the joist running parallel to it, and a strap is being used across the joists, the gap should be packed and noggins provided between joists being secured.

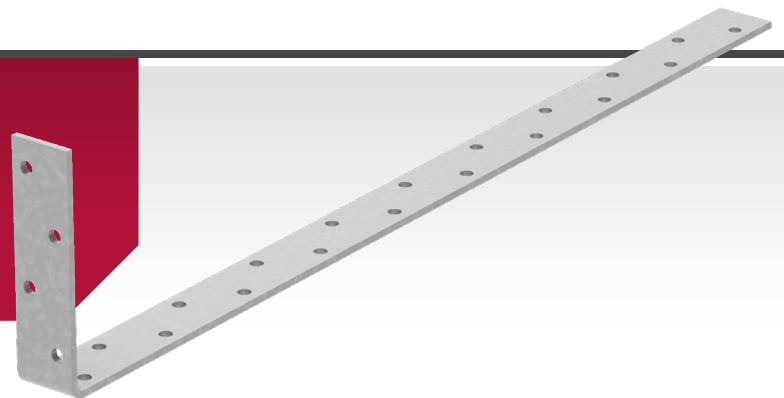
Technical

Manufactured from galvanised steel. 6mm holes at 25mm offset centres.

Ordering

Straps can be cut, bent and twisted to your requirements.

1. Type: Heavy Duty
2. Overall length
3. Distance to bends and twists - all from one end.



TTMH2 TWO PIECE BUILD IN JOIST HANGER

The Tecties joist hanger ranges offer very strong and effective methods of supporting timber joists, built in to brick or block walls. They can also be used in timber to timber connections with an onsite adjustment as well as attaching joists to steel beams. Appropriate fixings and methods should always be used.



Installation

- The joist hanger should have a minimum of 3 courses (675mm) of solid block work on top of the joist flange, and any masonry above or below the hanger must be fully cured before any load is added.
- The back plate of the hanger must be tight and flat against the wall.
- Timber Joists must be cut accurately to ensure a tight fit against the hanger back plate (a maximum gap of 6mm is permitted) before being fixed using 30mm x 3.75mm galvanised square twist nails, or equivalent.

Variations

Tecties welded joist hanger

Traditional design that is excellent for both new build and retro. fitting, due to its contained width the hanger can be fitted quickly and also flush against obstacles.

Tecties welded hookover hanger

The addition of the hookover plate does not increase any weight loadings. It does however allow for single user installation, as all hangers can be positioned quickly and left in place while you continue the build.

The depth of the hookover plate must be specified at time of order.

Tecties welded straddle hanger

Again the addition of the straddle plate offers no extra weight loading capacity but does once again allow for single user installation. It also ensures the twoconnected hangers align exactly on either side of the supporting wall.

The depth of the straddle plate must be specified at the time of order.

Material

- Tecties welded joist hangers are manufactured from mild steel and galvanised after manufacture.
- All the joist hangers within these two ranges of 150mm deep and above are manufactured 10mm less than overall size to allow for notching and for regularised timber.

Specification

Manufactured to BS EN 845-1:2013

Tested to EN846-4 under AVCP system 3 and issued test report Ref: 133412/Ref. 1<

Depth (mm)	Width (mm)											
	38	44	47	50	63	75	100	125	150	200	225	250
75	✓	N/A	N/A	✓	✓	✓	✓	✓	✓	N/A	N/A	N/A
100	✓	✓	✓	✓	✓	✓	✓	✓	✓	N/A	N/A	N/A
125	✓	✓	✓	✓	✓	✓	✓	✓	✓	N/A	N/A	N/A
150	✓	✓	✓	✓	✓	✓	✓	✓	✓	N/A	N/A	N/A
175	✓	✓	✓	✓	✓	✓	✓	✓	✓	N/A	N/A	N/A
200	✓	✓	✓	✓	✓	✓	✓	✓	✓	✓	✓	N/A
225	✓	✓	✓	✓	✓	✓	✓	✓	✓	✓	✓	✓
250	✓	N/A	N/A	✓	✓	✓	✓	✓	✓	✓	N/A	N/A
275	✓	N/A	N/A	✓	✓	✓	✓	✓	✓	N/A	N/A	N/A
300	N/A	N/A	N/A	✓	✓	✓	✓	✓	✓	N/A	N/A	N/A

visit www.tecties.co.uk for more information or call **01663 749361**

📍 Tecties, Hague Bar Works, Hague Bar, New Mills SK22 3AT
 📞 T: 01663 749361 F: 01663 747897 🌐 E: sales@tecties.co.uk



UKNI Compliance

TTMHI SINGLE PIECE BUILD IN JOIST HANGER

Variations

Tecties single piece joist hanger

Our new single piece hangers are being made on state of the art machines which allow us to produce extraordinary consistency combined with additional inbuilt strength which will give you excellent support through any building project. Our world leading design software will allow us to produce a hanger for almost every eventuality.

Tecties single piece hookover hanger

The addition of the hookover plate does not increase any weight loadings. It does however allow for single user installation, as all hangers can be positioned quickly and left in place while you continue the build.

The depth of the hookover plate must be specified at time of order.

Tecties single piece straddle hanger

Again the addition of the straddle plate offers no extra weight loading capacity but does once again allow for single user installation. It also ensures the two connected hangers align exactly on either side of the supporting wall. The depth of the straddle plate must be specified at the time of order.

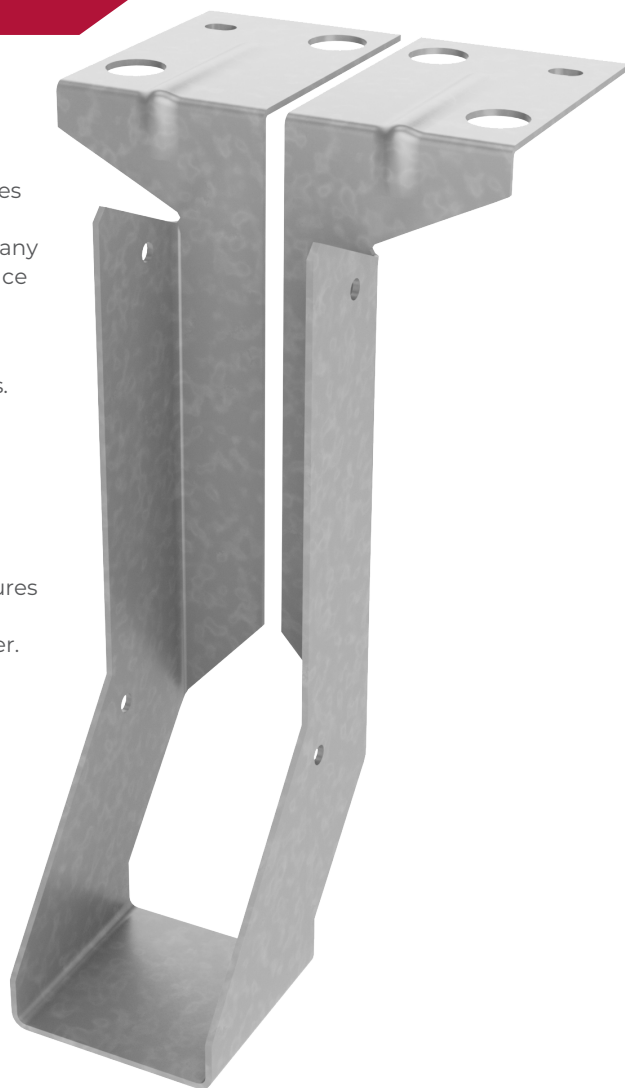
Material

- Tecties single piece joist hangers are manufactured from pre galvanised mild steel.
- Joist hangers of 150mm depth and greater are manufactured 10mm less than overall size to allow for notching and for regularised timber. 10mm less than overall size to allow for notching and for regularised timber.

Specification

Manufactured to BS EN 845-1:2013

Tested to EN846-4 under AVCP system 3 and issued test report Ref: 133412/Ref. 1



Depth (mm)	Width (mm)			
	47	50	75	100
100	✓	✓	✓	✓
125	✓	✓	✓	✓
150	✓	✓	✓	✓
175	✓	✓	✓	✓
200	✓	✓	✓	✓
225	✓	✓	✓	✓

TTMULTI MULTI HANGER

The Tecties Multi hangers are an effective quick and very strong way to support timber joists from either solid masonry walls or from timber headers.

Installation

- A combination of both nail / screw and boltholes gives maximum options when fixing a multi hanger.
- If using nails, you should always use 30mm x 3.75mm galvanised square twist nails or equivalent.
- Ideal for use on masonry walls that don't have a regular grout line.
- Ideal for use where height restricts access.

Variations

Tecties standard multi hanger

Designed with externally visible fixing flanges for when space is not an issue.

Tecties internal fix multi hanger

Designed with internal fixing flanges for when an invisible fix is required or when the hanger needs butting up to another fixture.

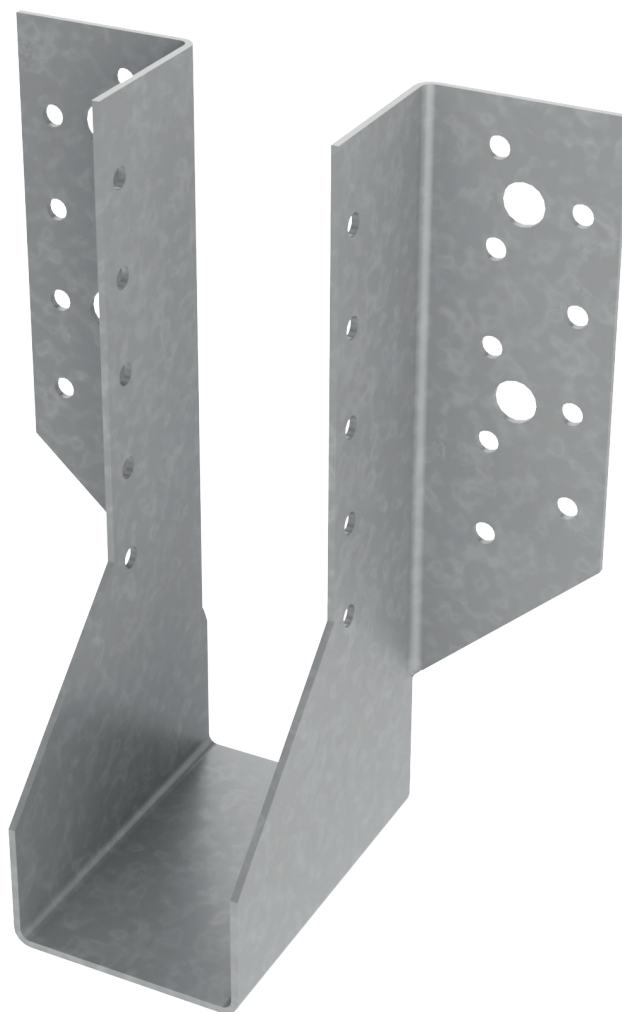
Tecties sloped / skewed multi hanger

Designed and manufactured to your individual requirements.

All of these products require a specified timber size at the time of ordering.





Material

- Both styles of Multi Hanger are manufactured from pre galvanised mild steel.
- Both styles of Multi Hanger must cover a minimum of 60% of the overall height of the timber joist.



Width (mm)	Unformed Length (mm)					
	240	320	380	440	500	620
38	38x125	38x150	38x175	N/A	N/A	N/A
47	47x100	47x150	47x175	47x200	47x250	N/A
50	50x100	50x150	50x175	50x200	50x250	N/A
75	N/A	75x125	75x175	75x200	75x225	75x275
100	N/A	100x125	100x150	100x175	100x200	100x275
125	N/A	N/A	N/A	125x175	125x200	125x250
150	N/A	N/A	N/A	N/A	150x200	150x250
200	N/A	N/A	N/A	N/A	N/A	200x225

visit www.tecties.co.uk for more information or call **01663 749361**

 Tecties, Hague Bar Works, Hague Bar, New Mills SK22 3AT
 T: 01663 749361  F: 01663 747897  E: sales@tecties.co.uk

**UK
CA**

UKNI Compliance

TTMH050 MINI HANGER

The Tecties Mini joist hanger offers fast and effective support in light weight timber to timber applications. Use for decking joist support and for non-load bearing flat roof projects.

Installation

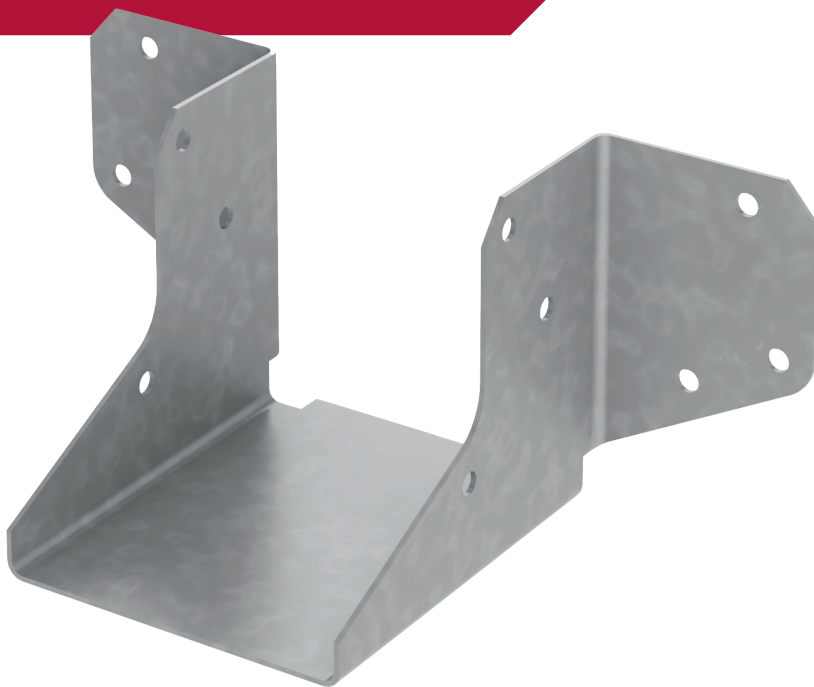
- The mini hanger should cover at least 50% of the timber joist to help prevent twisting.
- All nail holes should be used.
- Always use 30mm x 3.75mm galvanised square twist nails or equivalent.

Sizes





Width (mm)	Height (mm)	Depth (mm)
38	71	40
44	68	40
47	67	40
50	65	40

Material

All sizes of mini hangers are manufactured from pre galvanised mild steel.



visit www.tecties.co.uk for more information or call **01663 749361**

 Tecties, Hague Bar Works, Hague Bar, New Mills SK22 3AT
 T: 01663 749361  F: 01663 747897  E: sales@tecties.co.uk

**UK
CA**

UKNI Compliance

TTQF QUICK FIX HANGER

The Tecties quick fix joist hanger range offers a wide selection of alternatives for every eventuality, giving you fast and effective support in most timber to timber applications in particular the support of floor joists and trimmers.

Installation

- All nail holes should be utilised.
- Hangers should be fixed using 30mm x 3.75mm Galvanised square twist nails or equivalent.
- Any excess leg length should be wrapped around the connecting timber and once again all nail holes used.

Variations

Tecties heavy duty 450mm long leg joist hanger

These should be used where the joist needs to extend below the support timber. For instance, loft conversions or when lowering a ceiling provided between joists being secured.

Size Guide

To suit timber widths – 38mm, 44mm, 47mm, 50mm, 63mm, 75mm, 90mm, 100mm, 125mm & 150mm.

Other timber widths can be made to special order.

Tecties heavy duty 600mm long leg joist hanger

These can be used in the same applications as the 450mm long leg joist hanger where the two connecting timbers exceed the formers required length.

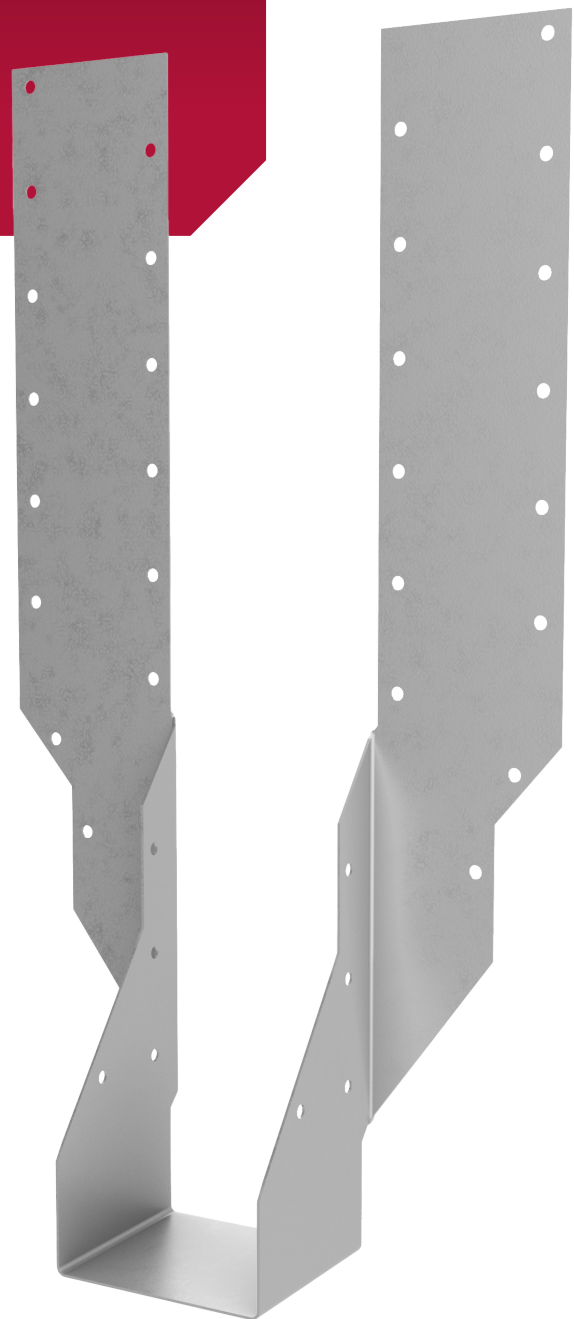
Size Guide

To suit timber widths – 38mm, 44mm, 47mm, 50mm, 63mm, 75mm, 90mm, 100mm, 125mm & 150mm.

Other timber widths can be made to special order.

Material

This product group are all manufactured using pre galvanised mild steel to – EN 10346DX51D Z275.



Standard Quick Fix

Width (mm)	Height (mm)	Depth (mm)
38	276	
44	273	
47	271	
50	270	
63	263	
75	257	
91	249	
100	245	

Standard Duty Long Leg Quick Fix

Width (mm)	Height (mm)	Depth (mm)
38	456	
44	453	
50	450	
75	437	
91	429	
100	425	

Heavy Duty Long Leg Quick Fix

Width (mm)	Height (mm)	Depth (mm)
38	456	
44	453	
50	450	
75	437	
91	429	
100	425	
125	412	
150	400	

visit www.tecties.co.uk for more information or call **01663 749361**

📍 Tecties, Hague Bar Works, Hague Bar, New Mills SK22 3AT
 📞 T: 01663 749361 F: 01663 747897 🌐 E: sales@tecties.co.uk



UKNI Compliance