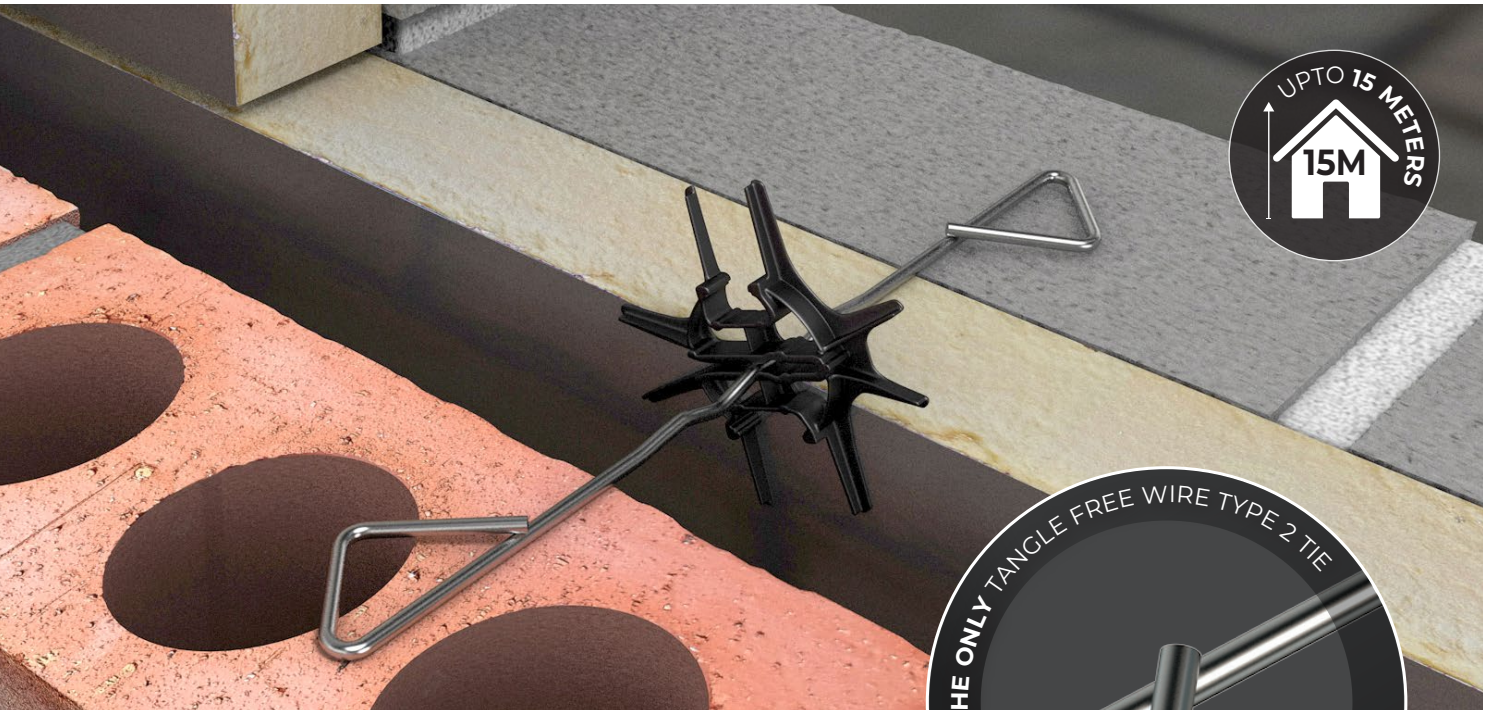




DATASHEET/DECLARATION OF PERFORMANCE

# TT2 GENERAL PURPOSE WALL TIE

TEC/DD/1003



The unique tangle free design of TecTies Type 2 General Purpose Tie offers a practical and cost effective solution for masonry cavity walls in domestic houses and small commercial buildings of up to a maximum 15m in height.

Fully tested to BS EN 846-5: 2012. The ties meet the requirements of BS EN 845-1: 2013. They will also meet the requirements of Part E of the Building Regulations for Type B in external walls.



## Design Advantages

### Tangle Free fully closed ends:

- Save time wasted on site separating tangled ties.
- Prevent waste and reduce unnecessary replacement costs.
- Are supplied bundled without boxes to minimise packaging materials and environmental impact, and can be stored outdoors with no deterioration.
- Eliminate the risk of injury from sharp tie ends protruding from masonry work.

**Impossible to install upside down due to its multi drip form**




Scan the QR code  
to find out more



## TT2 PRODUCT ATTRIBUTES

Product Category	General Purpose Tie
Product Description	S/S TT2 General Purpose Tie
Product Code	TT2
Product Brand Name	General Purpose Tie

	TT2200	TT2225	TT2250	TT2275 (3.3)	TT2300 (3.6)	TT2300 (3.3)	TT2300 (3.6)
Cavity Width	50mm to 75mm	76mm to 100mm	101mm to 125mm	126mm to 150mm	101mm to 125mm	101mm to 125mm	126mm to 150mm
Product Finish	Mill Finish	Mill Finish	Mill Finish	Mill Finish	Mill Finish	Mill Finish	Mill Finish
Length	200mm	225mm	250mm	275mm	275mm	300mm	300mm
Material Gauge	3mm	3mm	3.3mm	3mm	3.6mm	3.3mm	3.6mm
Material	Stainless Steel Grade 304						
Drip Function	Multi Drip	Multi Drip	Multi Drip	Multi Drip Offset	Multi Drip Offset	Multi Drip Offset	Multi Drip Offset
Packaging Box / Bundle	Bundle						
Package Qty	250no.						
Tag / Label	Tag						
Individual Weight	0.018 KG	0.019 KG	0.025 KG	0.028 KG	0.028 KG	0.03 KG	0.03 KG
Package Weight	4.5 KG	4.75 KG	6.25 KG	7 KG	7 KG	7.5 KG	7.5 KG

<b>Packaging Material</b> 	Stainless Steel, Tag: HDPE, Cable Tie: Nylon 66 <b>Widely Recyclable - Check with your local council guidelines</b> Please visit the Environmental Commitment page <a href="#">here</a>
<b>Storage</b>	Bundles of stainless steel wall ties may be stored outdoors, provided they are protected from contamination. Regular checks should be carried out to ensure packaging remains intact, ties remain clean, and there are no signs of corrosion, damage, or foreign material that could affect product quality or performance.
<b>Safe Handling</b>	Please visit the Handling Safety Information page <a href="#">here</a>
<b>Fire Rating</b>	Euroclass A1

## DECLARATION OF PERFORMANCE

TecTies Ltd hereby declares that the Type 2 General Purpose Wall Tie TT2 are in conformity with the provisions of **ZA Annex of EN 845—1 : 2013+A1:2016**

### Intended Use

Symmetrical Wall Tie Type 2 /Type B designed to connect two leaves of a cavity wall in masonry construction

### Suitable for

See table below

### Notified Body

Lucideon Limited, Queens Road, Penkhull, Stoke on Trent ST4 7LQ Tel. +44 (0)1782 764428

**Notified Body Number** 1289

**Underwritten by TZUS – Prague**

**Notified Body Number** 1020

The system of assessment and verification of constancy of performance for this construction product conforms to **System 3**

## TT2 Essential Characteristics

	200mm	225mm	250mm	275mm (3.3)	275mm (3.6)	300mm (3.3)	300mm (3.6)
Cavity Width	50-75mm	76-100mm	101-125mm	126-150mm	126-150mm	126-150mm	126-150mm
Compressive Load Capacity	1090N	1090N	1120N	1120N	1240N	1120N	1240N
Tensile Load Capacity	1888N	1888N	1888N	1888N	1910N	1888N	1910N
Displacement at 1/3 Load - Compression	0.13mm	0.13mm	0.16mm	0.16mm	0.16mm	0.16mm	0.16mm
Displacement at 1/3 Load - Tensile	0.63mm	0.63mm	0.27mm	0.27mm	0.25mm	0.27mm	0.25mm
Building Heights	Up to 15m						
Water Shedding Capability	Resistant						
Durability - Material Reference 3	Austenitic Stainless Steel						
Durability - Wire Grade	304 18/8 comp. to BS EN 10088/1						
Embedment Depth	62.5mm						
Drip function	Multi drip (Offset Multi drip on 275mm and 300mm).						
Minimum Mortar Designation	(iv)						
Minimum Mortar Joint Width	10mm						
Conformity Assessment	UKCA/CE+UKNI marked						
Testing	Tests were carried out by Lucideon Limited (UKAB No. 1289) in accordance with BS EN 846-5:2012: Methods of Test for Ancillary Components for Masonry – Part 5: Determination of Tensile and Compressive Load Capacity and Load Displacement Characteristics of Wall Ties (couplet test).						

All tested product information is available on request. Please contact us for more information.

# TT2 GENERAL PURPOSE WALL TIE

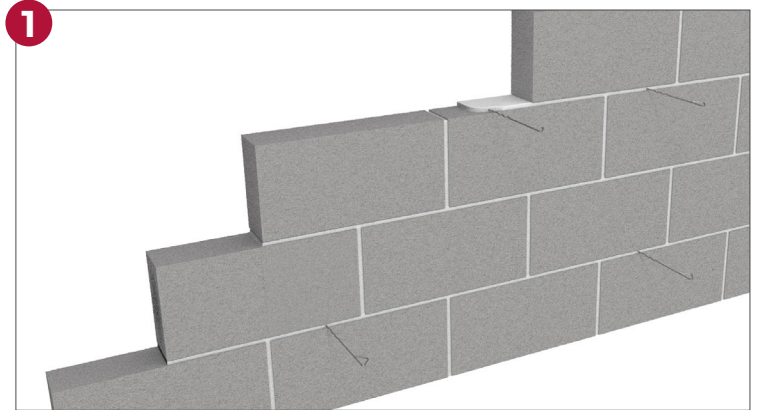
TEC/DD/1003

## CONSTRUCTION ORDER

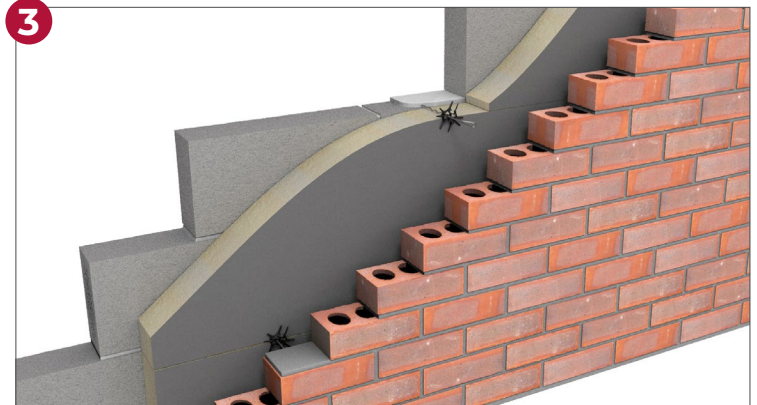
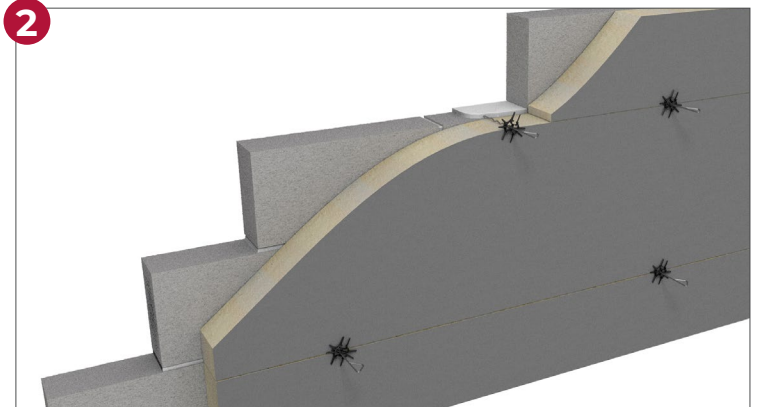
- 1 Build the Inner Leaf
- 2 Position the Tie in mortar [Install Insulation (if applicable)]
- 3 Build the Outer Leaf

**Note:** do not cut, bend or shape ties.

Images shown are using partial fill insulation. Ties can also be used with full fill insulation.



Minimum  
embedment  
depth  
**62.5mm**



## Installation

Tecties Limited products must be installed in accordance with the relevant product specifications, Declaration of Performance (DOP), and current building regulations to ensure full compliance with performance and safety requirements.

Only competent and trained personnel should carry out installation work. Working in accordance with the current HSE manual handling legislation.

Products must be checked prior to installation to confirm that they are undamaged, of the correct type, and suitable for the intended application. Any damaged or

non-conforming items must not be installed and should be reported immediately to the supplier or site supervisor.

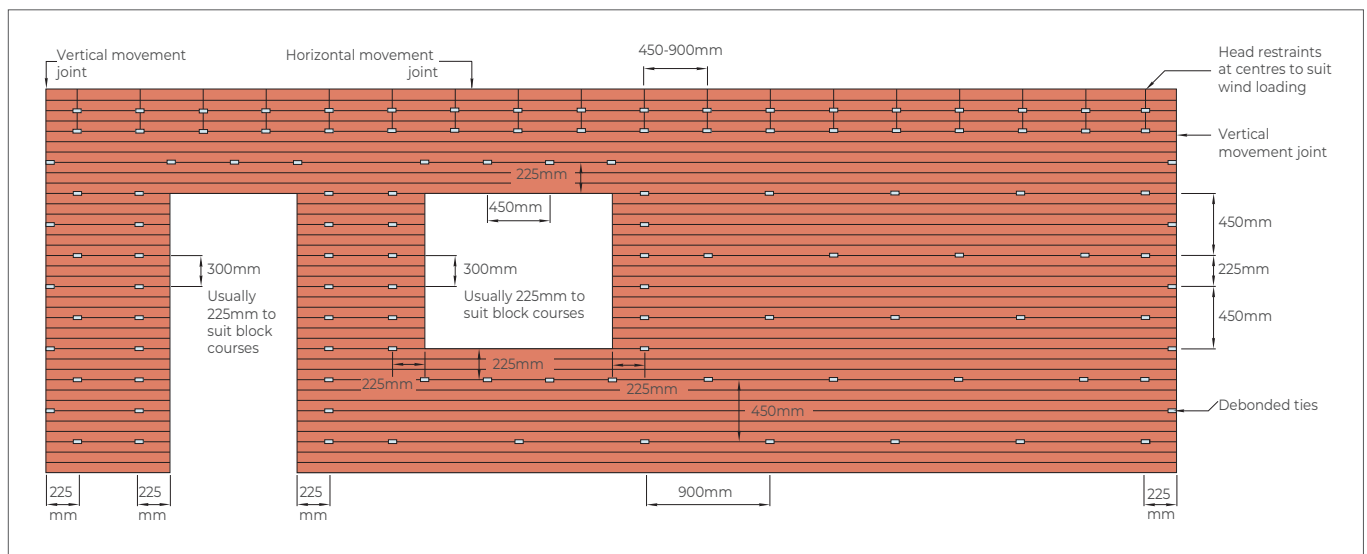
Installation must be carried out using appropriate tools, equipment, and Personal Protective Equipment (PPE). Care should be taken when handling or fitting components with sharp edges or when working at height or in restricted areas.

All products must be installed in line with current building regulations, project specifications, and site safety procedures.

Once installation is complete, the work area should be checked to ensure all fixings are correctly secured, and waste materials are recycled or disposed of safely and responsibly.

## WALL TIE SPACING AND POSITIONING

In cavity walls where both leaves are 90mm or thicker there should be a minimum of 2.5 ties per square metre. The maximum horizontal spacing is 900mm and the maximum vertical spacing is 450mm, although this may be varied if required by the Building Regulations. The ties should be evenly distributed over the wall area, in a staggered pattern, except around openings.



### Standard spacing for cavity brickwork 900mm x 450mm centres in a staggered pattern (2.5 ties per square metre)

Change the wall tie pattern around openings such as windows, doors, roof verges, unreturned or unbonded edges and un-tied vertical movement joints. Here the vertical spacing is reduced to a maximum of 300mm and ties should not be more than 225mm from the edge of the opening. This often means there is a wall tie every course of blocks within 225mm of the opening. Spacing at vertical movement joints may be relaxed where the joint has a debonded tie.

### Offset Drip 275mm and 300mm only

The 275mm & 300mm Ties are manufactured with an offset drip. This is to accommodate when using thicker partial fill insulation in a larger cavity. Allowing the drip function to still be positioned in the clear part of the cavity.

**When using a full fill insulation, the drip becomes redundant.**

All our ties are fully tested by Lucideon UK. The UK leading test house all in accordance to NHBC requirements and PD6697.

