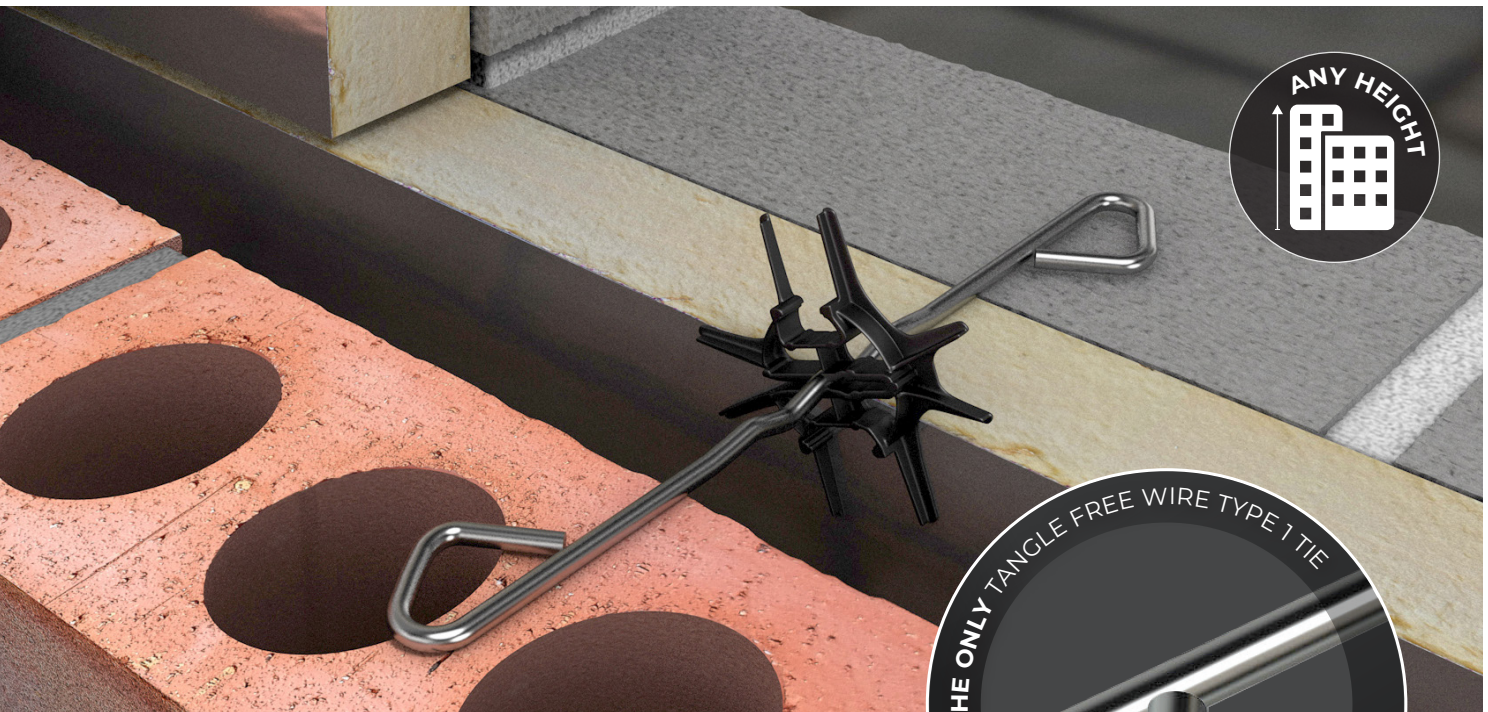




DATASHEET/DECLARATION OF PERFORMANCE

TT1 HEAVY DUTY WALL TIE

TEC/DD/1000



The unique tangle free design of TecTies TT1 Turbo Heavy Duty Tie offers a practical and cost effective solution in most cavity walls. The ties are specifically designed for cavity widths up to 150mm and buildings of any height.

Fully tested to BS EN 846-5:2012 the ties meet the requirements of BS EN 845-1:2013. They also meet the requirements of Part E of the Building Regulations for type B in external walls.

Design Advantages

Tangle Free fully closed ends:

- Save time wasted on site separating tangled ties.
- Prevent waste and reduce unnecessary replacement costs.
- Are supplied bundled without boxes to minimise packaging materials and environmental impact, and can be stored outdoors with no deterioration.
- Eliminate the risk of injury from sharp tie ends protruding from masonry work.

Impossible to install upside down due to its multi drip form




Check that you are using the most up to date version of this product information, **scan the QR code.**



TT1 PRODUCT ATTRIBUTES

| | |
|---------------------|------------------------------|
| Product Category | Heavy Duty Wall Tie |
| Product Description | S/S TT1 Turbo Tie Heavy Duty |
| Product Code | TT1 |
| Product Brand Name | Turbo Heavy Duty Tie |

| | TT1200 | TT1225 | TT1250 | TT1275 | TT1300 |
|------------------------|---------------------------|---------------------------|---------------------------|---------------------------|---------------------------|
| Cavity Width | 50mm to 75mm | 76mm to 100mm | 101mm to 125mm | 126mm to 150mm | 126mm to 150mm |
| Product Finish | Mill Finish | Mill Finish | Mill Finish | Mill Finish | Mill Finish |
| Length | 200mm | 225mm | 250mm | 275mm | 300mm |
| Material Gauge | 4.67mm | 4.67mm | 4.67mm | 4.92mm | 4.92mm |
| Material | Stainless Steel Grade 304 | Stainless Steel Grade 304 | Stainless Steel Grade 304 | Stainless Steel Grade 304 | Stainless Steel Grade 304 |
| Drip Function | Multi Drip | Multi Drip | Multi Drip | Multi Drip Offset | Multi Drip Offset |
| Packaging Box / Bundle | Bundle | Bundle | Bundle | Bundle | Bundle |
| Package Qty | 250no. | 250no. | 250no. | 250no. | 250no. |
| Tag / Label | Tag | Tag | Tag | Tag | Tag |
| Individual Weight | 0.043 KG | 0.046 KG | 0.049 KG | 0.058 KG | 0.064 KG |
| Package Weight | 10.75 KG | 11.50 KG | 12.25 KG | 14.67 KG | 16.12 KG |

| | |
|--|--|
| Packaging Material  | Tag: HDPE, Cable Tie: Nylon 66 Widely Recyclable - Check with your local council guidelines Please visit the Environmental Commitment page here |
| Storage | Bundles of stainless steel wall ties may be stored outdoors, provided they are protected from contamination. Regular checks should be carried out to ensure packaging remains intact, ties remain clean, and there are no signs of corrosion, damage, or foreign material that could affect product quality or performance. |
| Safe Handling | Please visit the Handling Safety Information page here |
| Fire Rating | Euroclass A1 |

DECLARATION OF PERFORMANCE

TecTies Ltd hereby declares that the Type 1 Heavy Duty Wall Tie TT1 are in conformity with the provisions of **ZA Annex of EN 845—1 : 2013+A1:2016**

Intended Use

Symmetrical Wall Tie Type 1/Type B designed to connect two leaves of a cavity wall in masonry construction

Suitable for

See table below

Notified Body

Lucideon Limited, Queens Road, Penkhull, Stoke on Trent ST4 7LQ Tel. +44 (0)1782 764428

Notified Body Number 1289

Underwritten by TZUS – Prague

Notified Body Number 1020

The system of assessment and verification of constancy of performance for this construction product conforms to **System 3**

TT1 Essential Characteristics

| | 200mm | 225mm | 250mm | 275mm | 300mm |
|--|---------------------------------|----------|-----------|-----------|-----------|
| Cavity Width | 50-75mm | 76-100mm | 101-125mm | 126-150mm | 126-150mm |
| Compressive Load Capacity | 4080N | 4080N | 4080N | 4180N | 4180N |
| Tensile Load Capacity | 3647N | 3647N | 3647N | 2796N | 2796N |
| Displacement at 1/3 Load - Compression | 0.35mm | 0.35mm | 0.35mm | 0.60mm | 0.60mm |
| Displacement at 1/3 Load - Tensile | 0.74mm | 0.74mm | 0.74mm | 0.28mm | 0.28mm |
| Building Heights | Suitable for any heights | | | | |
| Water Shedding Capability | Resistant | | | | |
| Durability - Material Reference 3 | Austenitic Stainless Steel | | | | |
| Durability - Wire Grade | 304 18/8 comp. to BS EN 10088/1 | | | | |
| Embedment Depth | 62.5mm | | | | |
| Drip function | Multi drip | | | | |
| Minimum Mortar Designation | (iv) | | | | |
| Minimum Mortar Joint Width | 10mm | | | | |
| Conformity Assessment | UKCA/CE+UKNI marked | | | | |

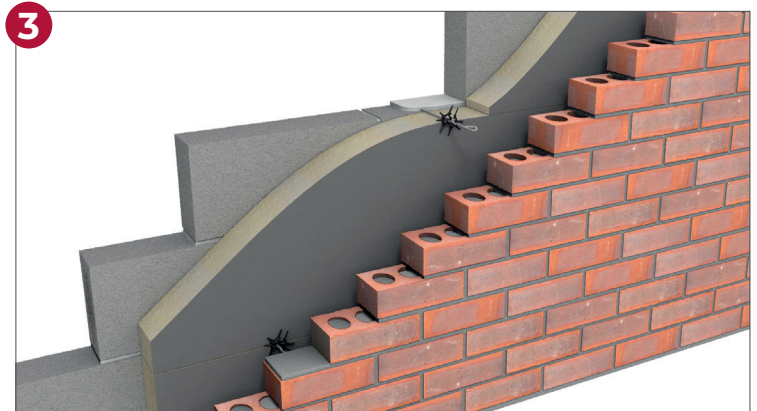
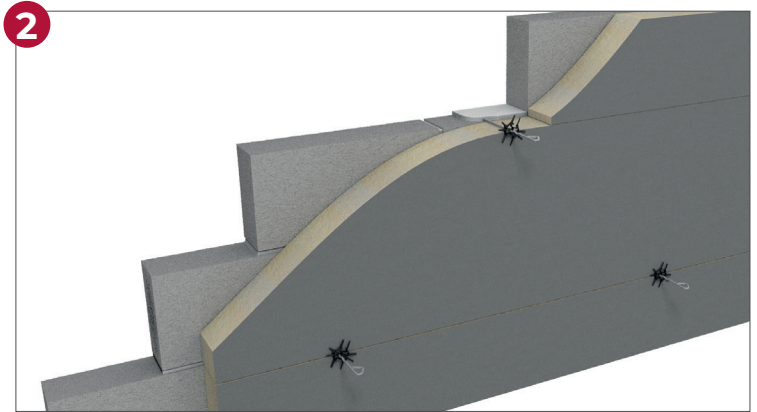
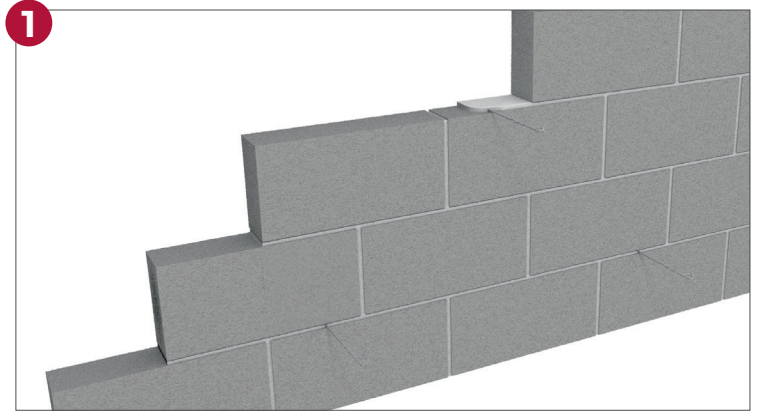
All tested product information is available on request. Please contact us for more information.

CONSTRUCTION ORDER

- 1 Build the Inner Leaf
- 2 Position the Tie in mortar [Install Insulation (if applicable)]
- 3 Build the Outer Leaf

Note: do not cut, bend or shape ties, this will affect the product performance.

Images shown are using partial fill insulation. Ties can also be used with full fill insulation.



Minimum
embedment
depth
62.5mm



Installation

Tecties Limited products must be installed in accordance with the relevant product specifications, Declaration of Performance (DOP), and current building regulations to ensure full compliance with performance and safety requirements.

Only competent and trained personnel should carry out installation work. Working in accordance with the current HSE manual handling legislation.

Products must be checked prior to installation to confirm that they are undamaged, of the correct type, and suitable for the intended application. Any damaged or

non-conforming items must not be installed and should be reported immediately to the supplier or site supervisor.

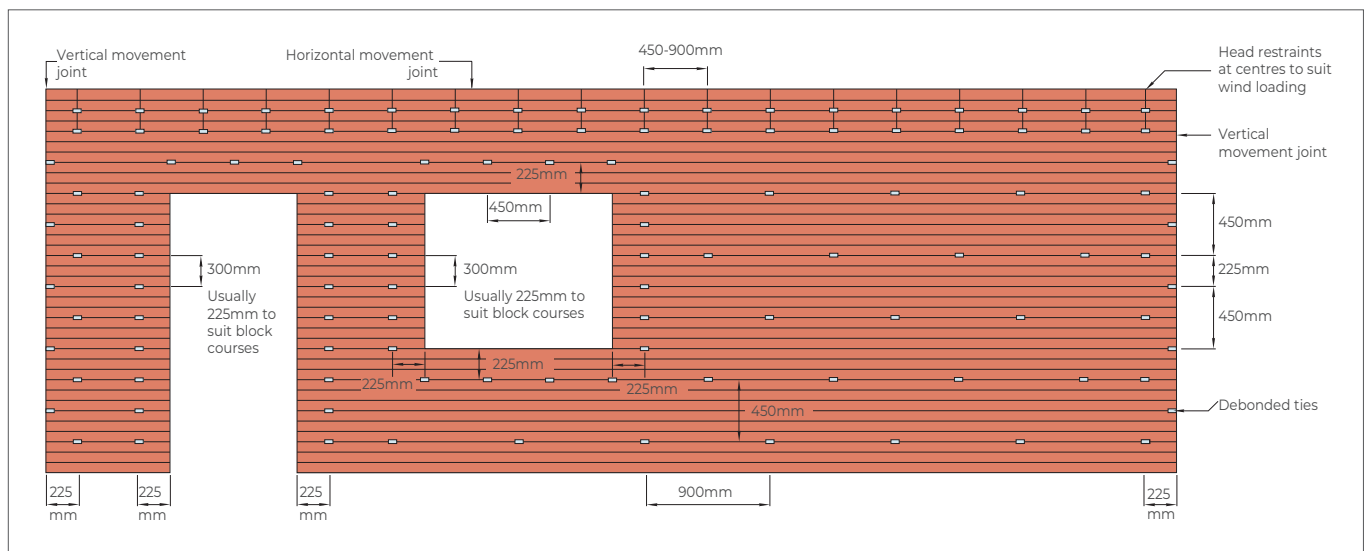
Installation must be carried out using appropriate tools, equipment, and Personal Protective Equipment (PPE). Care should be taken when handling or fitting components with sharp edges or when working at height or in restricted areas.

All products must be installed in line with current building regulations, project specifications, and site safety procedures.

Once installation is complete, the work area should be checked to ensure all fixings are correctly secured, and waste materials are recycled or disposed of safely and responsibly.

WALL TIE SPACING AND POSITIONING

In cavity walls where both leaves are 90mm or thicker there should be a minimum of 2.5 ties per square metre. The maximum horizontal spacing is 900mm and the maximum vertical spacing is 450mm, although this may be varied if required by the Building Regulations. The ties should be evenly distributed over the wall area, in a staggered pattern, except around openings.



Standard spacing for cavity brickwork 900mm x 450mm centres in a staggered pattern (2.5 ties per square metre)

Change the wall tie pattern around openings such as windows, doors, roof verges, unreturned or unbonded edges and un-tied vertical movement joints. Here the vertical spacing is reduced to a maximum of 300mm and ties should not be more than 225mm from the edge of the opening. This often means there is a wall tie every course of blocks within 225mm of the opening. Spacing at vertical movement joints may be relaxed where the joint has a debonded tie.

Offset Drip 275mm and 300mm only

The 275mm & 300mm Ties are manufactured with an offset drip. This is to accommodate when using thicker partial fill insulation in a larger cavity. Allowing the drip function to still be positioned in the clear part of the cavity.

When using a full fill insulation, the drip becomes redundant.

All our ties are fully tested by Lucideon UK. The UK leading test house all in accordance to NHBC requirements and PD6697.

