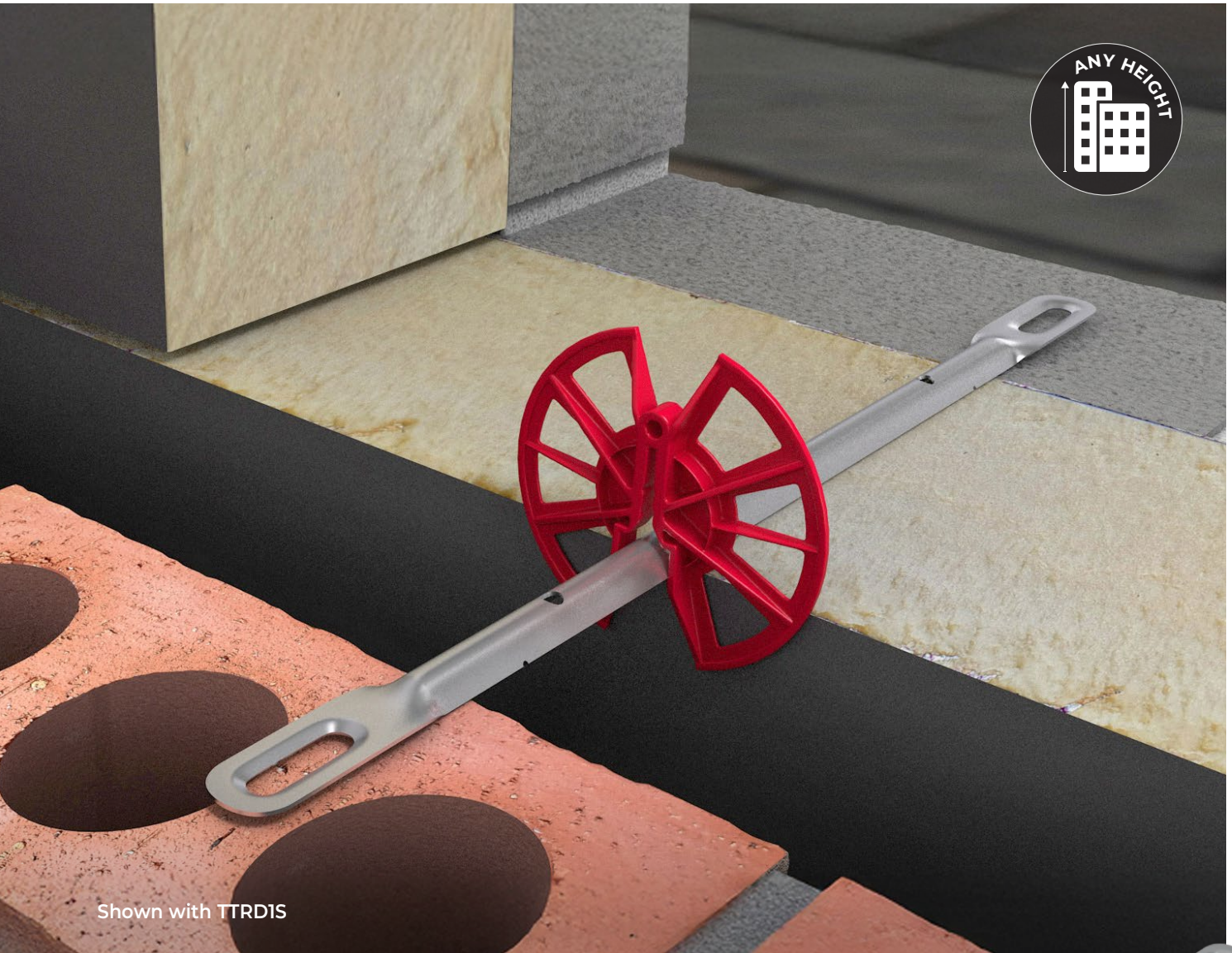




# DATASHEET/DECLARATION OF PERFORMANCE TTIS HEAVY DUTY WALL TIE

TEC/DD/1002

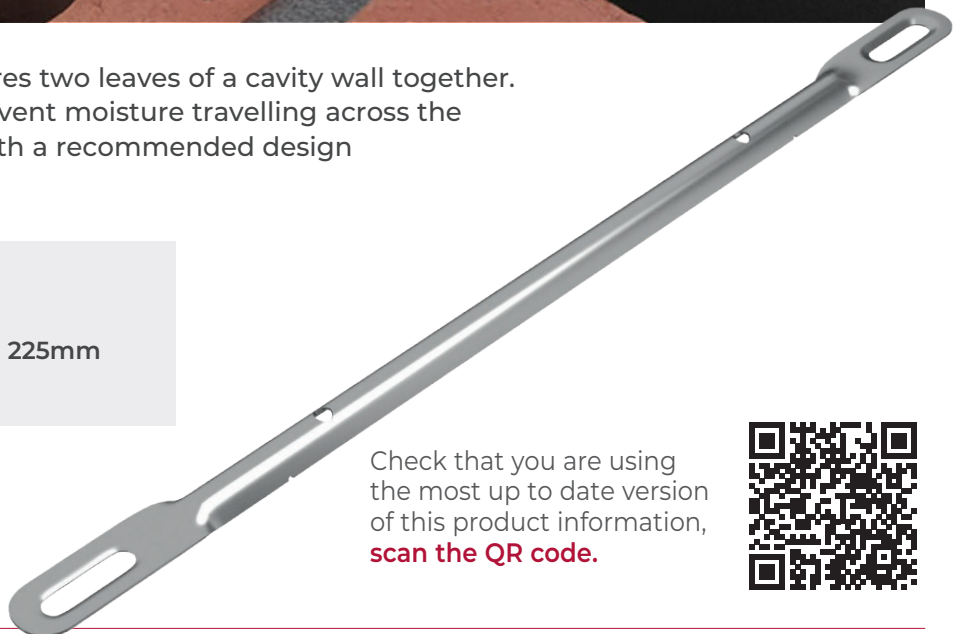


Shown with TTRD15

The Tec Ties Type 1 strip tie secures two leaves of a cavity wall together. It has a multidrip function to prevent moisture travelling across the cavity. It has two slotted ends with a recommended design embedment of 62.5mm.

### Design Advantages

Suitable for larger cavities up to 225mm




Check that you are using the most up to date version of this product information, **scan the QR code.**



## TTIS PRODUCT ATTRIBUTES

Product Category	Heavy Duty Wall Tie
Product Description	S/S TT S Type 1 Heavy Duty Tie
Product Code	TTIS
Product Brand Name	S/S TT S Type 1 Heavy Duty Tie

	TTIS225	TTIS250	TTIS275	TTIS300	TTIS325	TTIS350
Cavity Width	76mm to 100mm	101mm to 125mm	126mm to 150mm	150mm to 175mm	176mm to 200mm	176mm to 225mm
Product Finish	Mill Finish	Mill Finish	Mill Finish	Mill Finish	Mill Finish	Mill Finish
Length	225mm	250mm	275mm	300mm	325mm	350mm
Material Thickness	19x1mm	19x1mm	19x1mm	19x1mm	19x1mm	19x1mm
Material	Stainless Steel Grade 304					
Drip Function	Multi Drip	Multi Drip	Multi Drip	Multi Drip	Multi Drip	Multi Drip
Packaging Box / Bundle	Box	Box	Box	Box	Box	Box
Package Qty	250no.	250no.	250no.	250no.	250no.	250no.
Tag / Label	Label	Label	Label	Label	Label	Label
Individual Weight	0.05 KG	0.06 KG	0.07 KG	0.08 KG	0.09 KG	0.10 KG
Package Weight	7.97 KG	8.90 KG	9.80 KG	10.70 KG	11.65 KG	12.61 KG

<b>Packaging Material</b> 	Stainless Steel, Cardboard Box <b>Widely Recyclable - Check with your local council guidelines</b> Please visit the Environmental Commitment page <a href="#">here</a>
<b>Storage</b>	Boxes of stainless steel wall ties to be stored indoors, Individual wall ties can be stored outdoors provided they are protected from contamination. Regular checks should be carried out to ensure packaging remains intact, ties remain clean, and there are no signs of corrosion, damage, or foreign material that could affect product quality or performance.
<b>Safe Handling</b>	Please visit the Handling Safety Information page <a href="#">here</a>
<b>Fire Rating</b>	Euroclass A1

## DECLARATION OF PERFORMANCE

TecTies Ltd hereby declares that the Type 1 Heavy Duty Tie are in conformity with the provisions of **ZA Annex of EN 845—1 : 2013+A1:2016**

### Intended Use

Symmetrical Wall Tie Type 1/Type B designed to connect two leaves of a cavity wall in masonry construction

### Suitable for

76—225mm cavities

### Notified Body

Lucideon Limited, Queens Road, Penkhull, Stoke on Trent ST4 7LQ **Tel.** +44 (0)1782 764428

**Notified Body Number** 1289

**Underwritten by TZUS – Prague**

**Notified Body Number** 1020

The system of assessment and verification of constancy of performance for this construction product conforms to **System 3**

## TTIS Essential Characteristics

CAVITY WALL TIE	225mm	250mm	275mm	300mm	325mm	350mm
Cavity Width	76-100mm	101-125mm	126-150mm	150-175mm	176-200mm	176-225mm
Compressive Load Capacity	3260N	3260N	3260N	3260N	3260N	3260N
Tensile Load Capacity	2840N	2840N	2840N	2840N	2840N	2840N
Displacement at 1/3 Load - Compression	0.31mm	0.31mm	0.31mm	0.31mm	0.31mm	0.31mm
Displacement at 1/3 Load - Tensile	0.42mm	0.42mm	0.42mm	0.42mm	0.42mm	0.42mm
Building Heights	Suitable for any heights					
Water Shedding Capability	Resistant					
Durability - Material Reference 3	Austenitic Stainless Steel					
Durability - Grade	304 18/8 comp. to BS EN 10088/1					
Embedment Depth	62.5mm					
Drip function	Multi drip					
Minimum Mortar Designation	(iv)					
Minimum Mortar Joint Width	10mm					
Conformity Assessment	UKCA/CE+UKNI marked					
Testing	Tests were carried out by Lucideon Limited (UKAB No. 1289) in accordance with BS EN 846-5:2012: Methods of Test for Ancillary Components for Masonry – Part 5: Determination of Tensile and Compressive Load Capacity and Load Displacement Characteristics of Wall Ties (couplet test).					

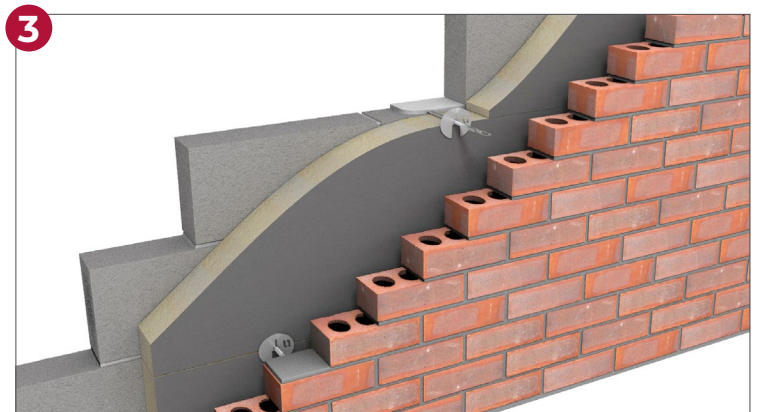
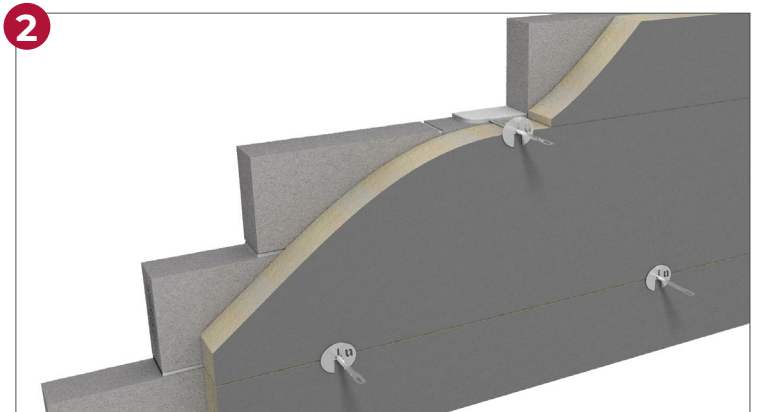
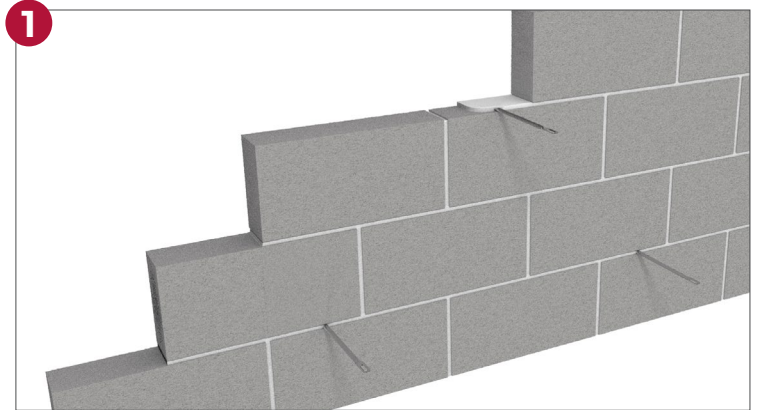
All tested product information is available on request. Please contact us for more information.

## CONSTRUCTION ORDER

- 1 Build the Inner Leaf
- 2 Position the Tie in mortar [Install Insulation (if applicable)]
- 3 Build the Outer Leaf

**Note: do not cut, bend or shape ties, this will affect the product performance.**

Images shown are using partial fill insulation. Ties can also be used with full fill insulation.



Minimum  
embedment  
depth

**62.5mm**



Shown with TTSSRD disc

## Installation

Tecties Limited products must be installed in accordance with the relevant product specifications, Declaration of Performance (DOP), and current building regulations to ensure full compliance with performance and safety requirements.

Only competent and trained personnel should carry out installation work. Working in accordance with the current HSE manual handling legislation.

Products must be checked prior to installation to confirm that they are undamaged, of the correct type, and suitable for the intended application. Any damaged or

non-conforming items must not be installed and should be reported immediately to the supplier or site supervisor.

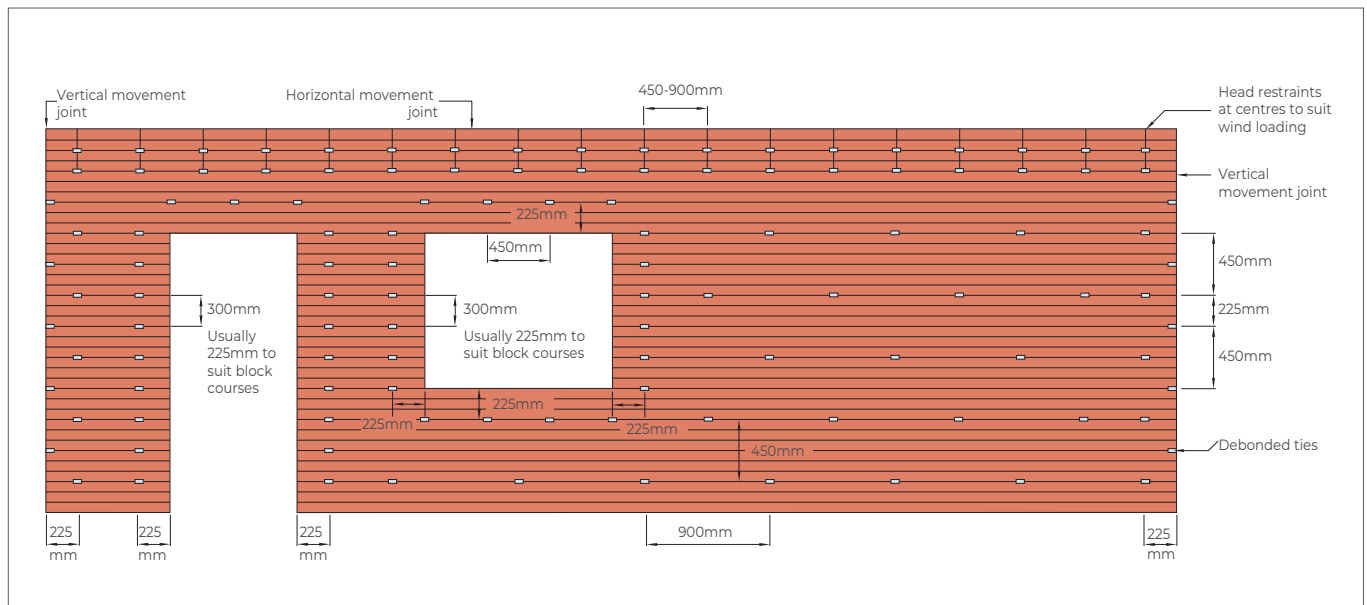
Installation must be carried out using appropriate tools, equipment, and Personal Protective Equipment (PPE). Care should be taken when handling or fitting components with sharp edges or when working at height or in restricted areas.

All products must be installed in line with current building regulations, project specifications, and site safety procedures.

Once installation is complete, the work area should be checked to ensure all fixings are correctly secured, and waste materials are recycled or disposed of safely and responsibly.

## WALL TIE SPACING AND POSITIONING

In cavity walls where both leaves are 90mm or thicker there should be a minimum of 2.5 ties per square metre. The maximum horizontal spacing is 900mm and the maximum vertical spacing is 450mm, although this may be varied if required by the Building Regulations. The ties should be evenly distributed over the wall area, in a staggered pattern, except around openings.



### Standard spacing for cavity brickwork 900mm x 450mm centres in a staggered pattern (2.5 ties per square metre)

Change the wall tie pattern around openings such as windows, doors, roof verges, unreturned or unbonded edges and un-tied vertical movement joints. Here the vertical spacing is reduced to a maximum of 300mm and ties should not be more than 225mm from the edge of the opening. This often means there is a wall tie every course of blocks within 225mm of the opening. Spacing at vertical movement joints may be relaxed where the joint has a debonded tie.

